



STATE OF WASHINGTON

## OFFICE OF FINANCIAL MANAGEMENT

Insurance Building, PO Box 43113 • Olympia, Washington 98504-3113 • (360) 902-0555

**FOR IMMEDIATE RELEASE:** June 28, 2019

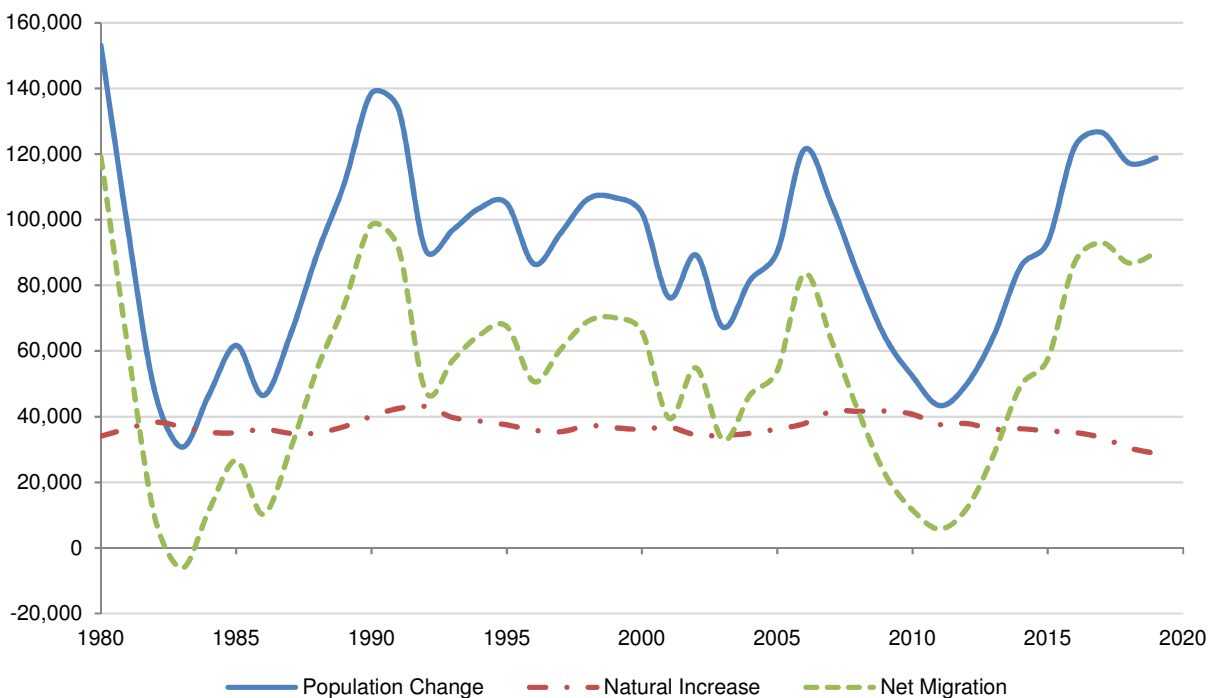
**CONTACT:** Mike Mohrman, 360-902-0602

### Washington tops 7.5 million residents in 2019

**OLYMPIA, Wash.** – As of April 1, 2019, an estimated 7,546,400 people reside in the state of Washington, according to annual estimates prepared by the Office of Financial Management.

Strong population growth continues in Washington, with the state adding 118,800 people over the past year, a 1.6% increase. Migration continues to be the primary driver behind Washington's population growth. From 2018 to 2019, net migration (people moving in minus people moving out) to Washington totaled 90,100, up by 3,300 from last year. Net migration accounted for 76% of the state's population growth, with natural increase (births minus deaths) responsible for the other 24%.

**Components of State Population Change**



This year, 69% of state population growth occurred in the five largest metropolitan counties — Clark, King, Pierce, Snohomish and Spokane — down from 70% in 2018. However, momentum continues to shift to other metropolitan and nonmetropolitan counties: those with populations between 100,000 and 300,000 saw their share of growth increase by 1% to 19% while the share for counties under 100,000 people remained at 12%. Franklin was the fastest-growing county between 2018 and 2019, with 2.31% growth, followed by Whatcom (2.25%) and Benton (2.22%).

The April 1, 2019, population estimate for Washington's incorporated cities and towns is 4,910,900, an increase of 74,400 people from the prior year. The top 10 cities for population growth, in descending order, are Seattle, Bellevue, Tacoma, Spokane, Kennewick, Redmond, Vancouver, Kirkland, Pasco and Bellingham. Seattle's population increased by 16,900 people for a total of 747,300.

Washington's population has grown by 821,900 people since the last decennial census — April 1, 2010. The state has grown by an average of 91,300 people per year this decade, exceeding that of 83,000 the previous decade. King County is the main contributor, with total growth of 295,100 people over nine years, compared to 194,200 people between 2000 and 2010.

The state added 44,900 housing units in 2019, compared to 42,600 in 2018, an increase of 5.4%. Of all new units built in the past year, 54% were multi-family. The state's housing stock has grown by an average of 31,700 units per year since 2010, 27% below the prior decade's average of 43,500 units per year. More than 71% of all new housing units this decade were built in one of the state's five largest metropolitan counties. King County leads all counties with 104,500 new housing units, or 37% of the state total since 2010.

Additional information on the latest population estimates for the state, counties, cities and towns is available at <http://www.ofm.wa.gov/pop/april1/>.

###

**Table 1. Population, Change and Rank**

County	Total Population			Numeric Change			Percentage Change			Percentage of State Total		
	2010	2018	2019	2010-19	2018-19	Rank	2010-19	2018-19	Rank	2010	2019	Rank
State	6,724,540	7,427,570	7,546,410	821,870	118,840	--	12.22	1.60	--	100.00	100.00	--
Adams	18,728	20,020	20,150	1,422	130	34	7.59	0.65	32	0.28	0.27	31
Asotin	21,623	22,420	22,520	897	100	35	4.15	0.45	38	0.32	0.30	28
Benton	175,177	197,420	201,800	26,623	4,380	7	15.20	2.22	3	2.61	2.67	10
Chelan	72,453	77,800	78,420	5,967	620	22	8.24	0.80	30	1.08	1.04	17
Clallam	71,404	75,130	76,010	4,606	880	20	6.45	1.17	25	1.06	1.01	18
Clark	425,363	479,500	488,500	63,137	9,000	4	14.84	1.88	9	6.33	6.47	5
Columbia	4,078	4,150	4,160	82	10	38	2.01	0.24	39	0.06	0.06	38
Cowlitz	102,410	107,310	108,950	6,540	1,640	12	6.39	1.53	15	1.52	1.44	12
Douglas	38,431	42,120	42,820	4,389	700	21	11.42	1.66	13	0.57	0.57	25
Ferry	7,551	7,780	7,830	279	50	37	3.69	0.64	34	0.11	0.10	36
Franklin	78,163	92,540	94,680	16,517	2,140	11	21.13	2.31	1	1.16	1.25	14
Garfield	2,266	2,210	2,220	-46	10	38	-2.03	0.45	37	0.03	0.03	39
Grant	89,120	97,350	98,740	9,620	1,390	14	10.79	1.43	21	1.33	1.31	13
Grays Harbor	72,797	73,610	74,160	1,363	550	23	1.87	0.75	31	1.08	0.98	19
Island	78,506	83,860	84,820	6,314	960	17	8.04	1.14	26	1.17	1.12	15
Jefferson	29,872	31,590	31,900	2,028	310	28	6.79	0.98	29	0.44	0.42	27
King	1,931,249	2,190,200	2,226,300	295,051	36,100	1	15.28	1.65	14	28.72	29.50	1
Kitsap	251,133	267,120	270,100	18,967	2,980	9	7.55	1.12	27	3.73	3.58	7
Kittitas	40,915	45,600	46,570	5,655	970	16	13.82	2.13	5	0.61	0.62	23
Klickitat	20,318	21,980	22,430	2,112	450	25	10.39	2.05	7	0.30	0.30	29
Lewis	75,455	78,380	79,480	4,025	1,100	15	5.33	1.40	22	1.12	1.05	16
Lincoln	10,570	10,810	10,960	390	150	33	3.69	1.39	23	0.16	0.15	35
Mason	60,699	64,020	64,980	4,281	960	17	7.05	1.50	16	0.90	0.86	20
Okanogan	41,120	42,490	42,730	1,610	240	29	3.92	0.56	36	0.61	0.57	26
Pacific	20,920	21,420	21,640	720	220	30	3.44	1.03	28	0.31	0.29	30
Pend Oreille	13,001	13,540	13,740	739	200	31	5.68	1.48	17	0.19	0.18	33
Pierce	795,225	872,220	888,300	93,075	16,080	2	11.70	1.84	11	11.83	11.77	2
San Juan	15,769	16,810	17,150	1,381	340	27	8.76	2.02	8	0.23	0.23	32
Skagit	116,901	126,520	129,200	12,299	2,680	10	10.52	2.12	6	1.74	1.71	11
Skamania	11,066	11,890	12,060	994	170	32	8.98	1.43	20	0.16	0.16	34
Snohomish	713,335	805,120	818,700	105,365	13,580	3	14.77	1.69	12	10.61	10.85	3
Spokane	471,221	507,950	515,250	44,029	7,300	5	9.34	1.44	19	7.01	6.83	4
Stevens	43,531	45,030	45,570	2,039	540	24	4.68	1.20	24	0.65	0.60	24
Thurston	252,264	281,700	285,800	33,536	4,100	8	13.29	1.46	18	3.75	3.79	6
Wahkiakum	3,978	4,100	4,190	212	90	36	5.33	2.20	4	0.06	0.06	37
Walla Walla	58,781	61,800	62,200	3,419	400	26	5.82	0.65	33	0.87	0.82	21
Whatcom	201,140	220,350	225,300	24,160	4,950	6	12.01	2.25	2	2.99	2.99	9
Whitman	44,776	49,210	50,130	5,354	920	19	11.96	1.87	10	0.67	0.66	22
Yakima	243,231	254,500	255,950	12,719	1,450	13	5.23	0.57	35	3.62	3.39	8

**Table 2. Components of Population Change**

County	2010–19			2018–19		
	Natural Increase	Net Migration	Population Change	Natural Increase	Net Migration	Population Change
State	311,590	510,280	821,870	28,783	90,057	118,840
Adams	2,506	-1,084	1,422	307	-177	130
Asotin	-107	1,004	897	-43	143	100
Benton	10,999	15,624	26,623	934	3,446	4,380
Chelan	2,118	3,849	5,967	104	516	620
Clallam	-2,664	7,270	4,606	-411	1,291	880
Clark	20,107	43,030	63,137	1,936	7,064	9,000
Columbia	-184	266	82	-25	35	10
Cowlitz	900	5,640	6,540	-2	1,642	1,640
Douglas	2,105	2,284	4,389	284	416	700
Ferry	-138	417	279	-25	75	50
Franklin	11,321	5,196	16,517	1,106	1,034	2,140
Garfield	-48	2	-46	-21	31	10
Grant	7,462	2,158	9,620	692	698	1,390
Grays Harbor	-493	1,856	1,363	-219	769	550
Island	1,850	4,464	6,314	98	862	960
Jefferson	-1,550	3,578	2,028	-234	544	310
King	112,184	182,867	295,051	11,937	24,163	36,100
Kitsap	7,960	11,007	18,967	723	2,257	2,980
Kittitas	1,030	4,625	5,655	111	859	970
Klickitat	241	1,871	2,112	23	427	450
Lewis	166	3,859	4,025	-119	1,219	1,100
Lincoln	-120	510	390	-18	168	150
Mason	-225	4,506	4,281	-103	1,063	960
Okanogan	732	878	1,610	-9	249	240
Pacific	-1,160	1,880	720	-242	462	220
Pend Oreille	-333	1,072	739	-71	271	200
Pierce	45,239	47,836	93,075	4,144	11,936	16,080
San Juan	-458	1,839	1,381	-32	372	340
Skagit	2,525	9,774	12,299	124	2,556	2,680
Skamania	134	860	994	25	145	170
Snohomish	39,843	65,522	105,365	4,191	9,389	13,580
Spokane	14,042	29,987	44,029	910	6,390	7,300
Stevens	-80	2,119	2,039	-57	597	540
Thurston	8,804	24,732	33,536	641	3,459	4,100
Wahkiakum	-166	378	212	-9	99	90
Walla Walla	724	2,695	3,419	-45	445	400
Whatcom	6,150	18,010	24,160	514	4,436	4,950
Whitman	1,465	3,889	5,354	90	830	920
Yakima	18,709	-5,990	12,719	1,574	-124	1,450

**Table 3. Components of Population Change, Average Annual Change**

County	1990–2000			2000–2010			2010–19		
	Natural Increase	Net Migration	Population Change	Natural Increase	Net Migration	Population Change	Natural Increase	Net Migration	Population Change
State	38,355.3	64,392.7	102,748.0	38,026.4	45,013.3	83,039.7	34,621.1	56,697.8	91,318.9
Adams	202.8	79.7	282.5	272.4	-42.4	230.0	278.4	-120.4	158.0
Asotin	44.5	250.1	294.6	35.2	72.0	107.2	-11.9	111.6	99.7
Benton	1,183.1	1,808.4	2,991.5	1,201.5	2,068.7	3,270.2	1,222.1	1,736.0	2,958.1
Chelan	428.6	1,008.0	1,436.6	380.3	203.4	583.7	235.3	427.7	663.0
Clallam	-52.6	850.1	797.5	-222.7	945.2	722.5	-296.0	807.8	511.8
Clark	2,561.1	8,157.4	10,718.5	2,973.9	5,038.6	8,012.5	2,234.1	4,781.1	7,015.2
Columbia	-5.0	9.0	4.0	-9.8	11.2	1.4	-20.4	29.6	9.1
Cowlitz	417.7	665.2	1,082.9	293.9	652.3	946.2	100.0	626.7	726.7
Douglas	232.8	407.0	639.8	235.3	347.5	582.8	233.9	253.8	487.7
Ferry	20.9	75.6	96.5	3.0	26.1	29.1	-15.3	46.3	31.0
Franklin	727.8	459.6	1,187.4	1,110.3	1,771.3	2,881.6	1,257.9	577.3	1,835.2
Garfield	-11.3	26.2	14.9	-9.3	-3.8	-13.1	-5.3	0.2	-5.1
Grant	739.1	1,250.9	1,990.0	916.3	525.9	1,442.2	829.1	239.8	1,068.9
Grays Harbor	145.9	156.0	301.9	57.2	503.1	560.3	-54.8	206.2	151.4
Island	524.7	611.6	1,136.3	354.2	340.6	694.8	205.6	496.0	701.6
Jefferson	-22.7	612.0	589.3	-91.2	448.5	357.3	-172.2	397.6	225.3
King	10,972.6	12,001.5	22,974.1	11,866.9	7,553.4	19,420.3	12,464.9	20,318.6	32,783.4
Kitsap	1,780.7	2,443.1	4,223.8	1,143.8	772.6	1,916.4	884.4	1,223.0	2,107.4
Kittitas	95.6	568.1	663.7	120.7	634.6	755.3	114.4	513.9	628.3
Klickitat	79.4	175.1	254.5	55.4	60.3	115.7	26.8	207.9	234.7
Lewis	193.8	730.4	924.2	144.2	541.3	685.5	18.4	428.8	447.2
Lincoln	-4.5	136.5	132.0	-17.7	56.3	38.6	-13.3	56.7	43.3
Mason	79.9	1,026.5	1,106.4	51.7	1,077.7	1,129.4	-25.0	500.7	475.7
Okanogan	214.3	407.1	621.4	157.5	-1.9	155.6	81.3	97.6	178.9
Pacific	-53.8	264.0	210.2	-98.7	92.3	-6.4	-128.9	208.9	80.0
Pend Oreille	35.7	246.0	281.7	-4.9	131.8	126.9	-37.0	119.1	82.1
Pierce	5,250.3	6,211.2	11,461.5	5,196.6	4,244.1	9,440.7	5,026.6	5,315.1	10,341.7
San Juan	6.3	397.9	404.2	-20.9	190.1	169.2	-50.9	204.3	153.4
Skagit	477.8	1,865.6	2,343.4	442.0	950.2	1,392.2	280.6	1,086.0	1,366.6
Skamania	32.6	125.7	158.3	33.2	86.2	119.4	14.9	95.6	110.4
Snohomish	4,807.0	9,232.6	14,039.6	4,780.0	5,951.1	10,731.1	4,427.0	7,280.2	11,707.2
Spokane	2,220.3	3,440.3	5,660.6	1,973.2	3,355.0	5,328.2	1,560.2	3,331.9	4,892.1
Stevens	140.4	771.4	911.8	66.2	280.3	346.5	-8.9	235.4	226.6
Thurston	1,091.6	3,520.1	4,611.7	1,025.3	3,465.6	4,490.9	978.2	2,748.0	3,726.2
Wahkiakum	-8.1	57.8	49.7	-20.1	35.5	15.4	-18.4	42.0	23.6
Walla Walla	206.6	467.5	674.1	153.1	207.0	360.1	80.4	299.4	379.9
Whatcom	836.9	3,067.7	3,904.6	786.4	2,645.0	3,431.4	683.3	2,001.1	2,684.4
Whitman	199.0	-2.5	196.5	190.6	213.0	403.6	162.8	432.1	594.9
Yakima	2,563.5	812.3	3,375.8	2,501.4	-436.4	2,065.0	2,078.8	-665.6	1,413.2

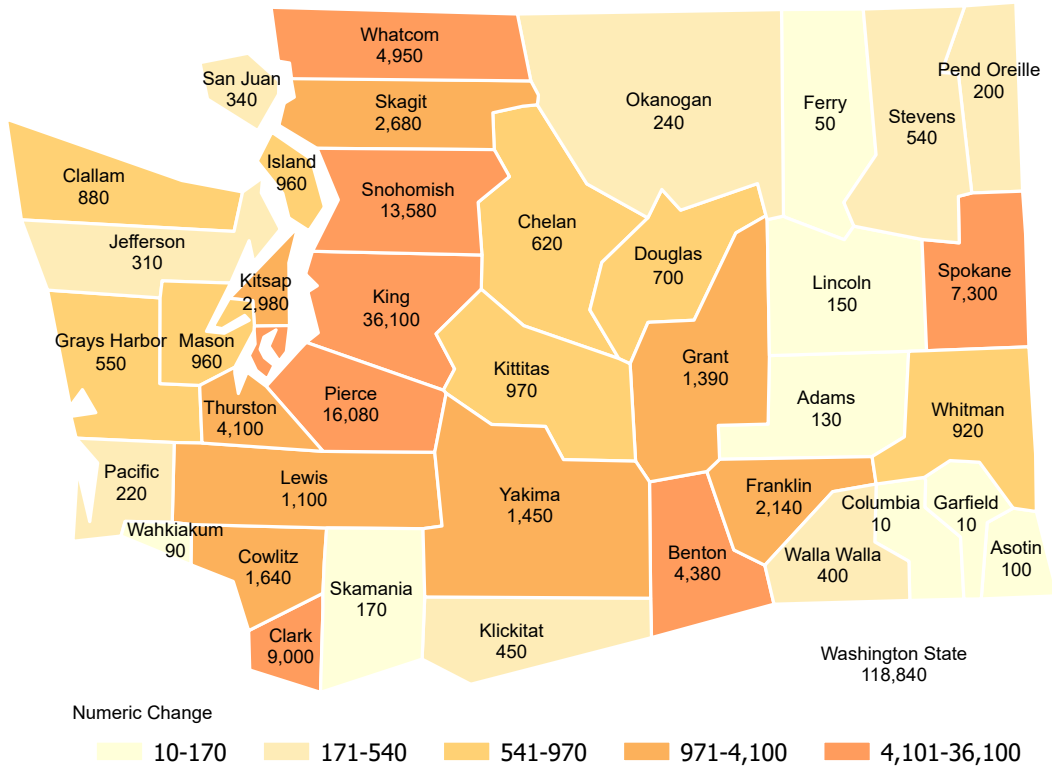
**Table 4. Top 25 Cities by Population Change**

<b>Municipality</b>	<b>Numeric Change 2018–19</b>	<b>Rank</b>	<b>Change Due to Annexation 2018–19</b>	<b>Municipality</b>	<b>Percent Change 2018–19</b>	<b>Rank</b>	<b>Change Due to Annexation 2018–19</b>
Seattle	16,900	1	0	Ridgefield	15.44	1	6
Bellevue	2,900	2	0	South Prairie	10.34	2	0
Tacoma	2,300	3	0	Rock Island	8.65	3	0
Spokane	1,900	4	0	Granite Falls	7.88	4	0
Kennewick	1,820	5	0	Nooksack	7.00	5	0
Redmond	1,810	6	0	Cathlamet	6.12	6	0
Vancouver	1,800	7	0	Liberty Lake	5.87	7	0
Kirkland	1,700	8	0	Tukwila	5.71	8	0
Pasco	1,700	8	5	Kalama	5.45	9	3
Bellingham	1,610	10	0	Airway Heights	5.06	10	0
Richland	1,530	11	270	Woodinville	4.90	11	0
Bothell	1,490	12	0	Ferndale	4.84	12	0
Lynnwood	1,340	13	0	Enumclaw	4.63	13	0
Ridgefield	1,190	14	6	Hatton	4.55	14	0
Tukwila	1,130	15	0	Rainier	4.46	15	0
Auburn	1,105	16	0	Gig Harbor	4.36	16	0
Lacey	1,100	17	14	Ocean Shores	4.34	17	0
Sammamish	940	18	0	White Salmon	4.19	18	0
Spokane Valley	910	19	0	Entiat	4.15	19	0
Kent	900	20	0	Waverly	4.00	20	0
Maple Valley	900	20	0	Black Diamond	3.78	21	0
Pullman	830	22	0	Anacortes	3.65	22	0
Marysville	780	23	0	Edgewood	3.64	23	0
Ferndale	660	24	0	Maple Valley	3.56	24	0
Shoreline	640	25	0	Chewelah	3.56	24	0

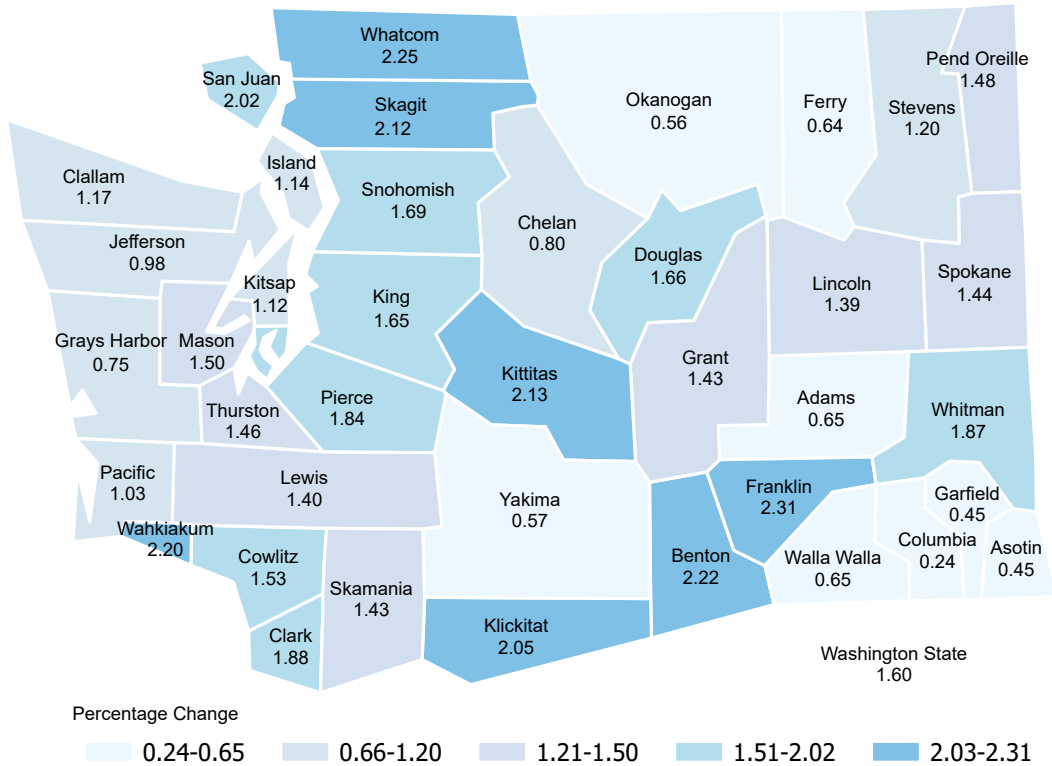
**Table 5. Top 10 Unincorporated Areas by Population Change**

<b>Area</b>	<b>Numeric Change</b>		<b>Change Due to Annexation</b>
	<b>2018–19</b>	<b>Rank</b>	<b>2018–19</b>
Unincorporated Pierce County	10,980	1	-42
Unincorporated Snohomish County	7,925	2	-28
Unincorporated Clark County	4,470	3	-16
Unincorporated Spokane County	3,020	4	0
Unincorporated Thurston County	2,235	5	-26
Unincorporated Whatcom County	2,071	6	-29
Unincorporated Kitsap County	1,640	7	0
Unincorporated King County	1,035	8	-2
Unincorporated Skagit County	1,025	9	0
Unincorporated Lewis County	900	10	-11

### Numeric Change in Population: 2018–19



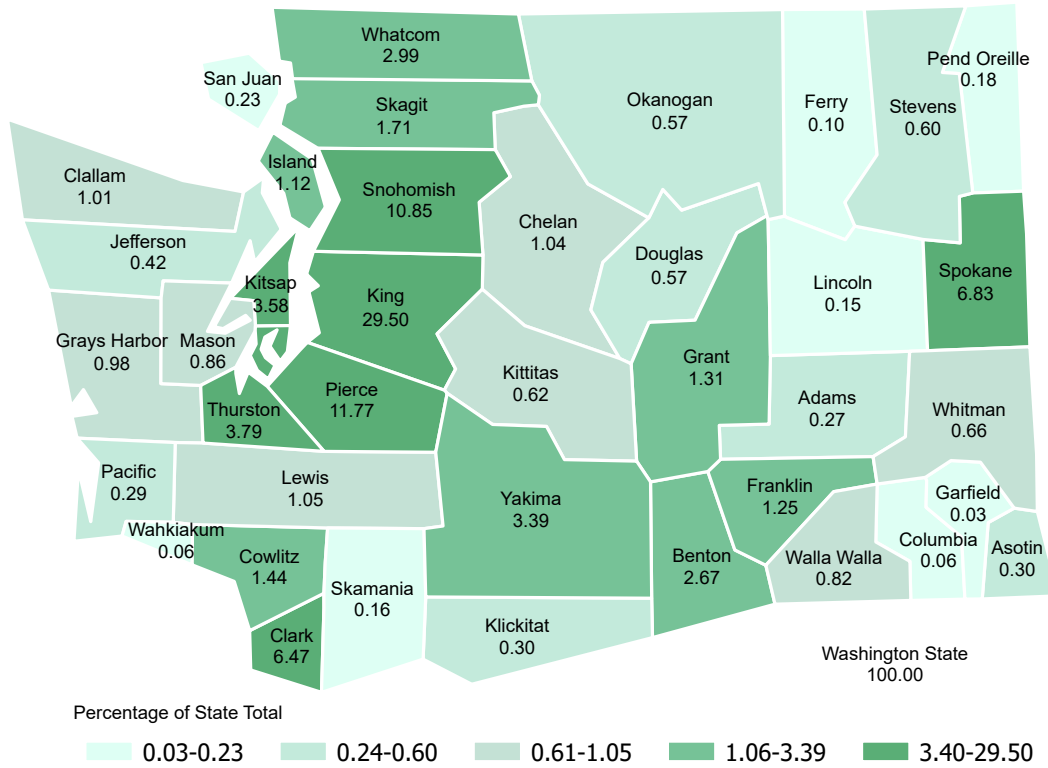
### Percentage Change in Population: 2018–19



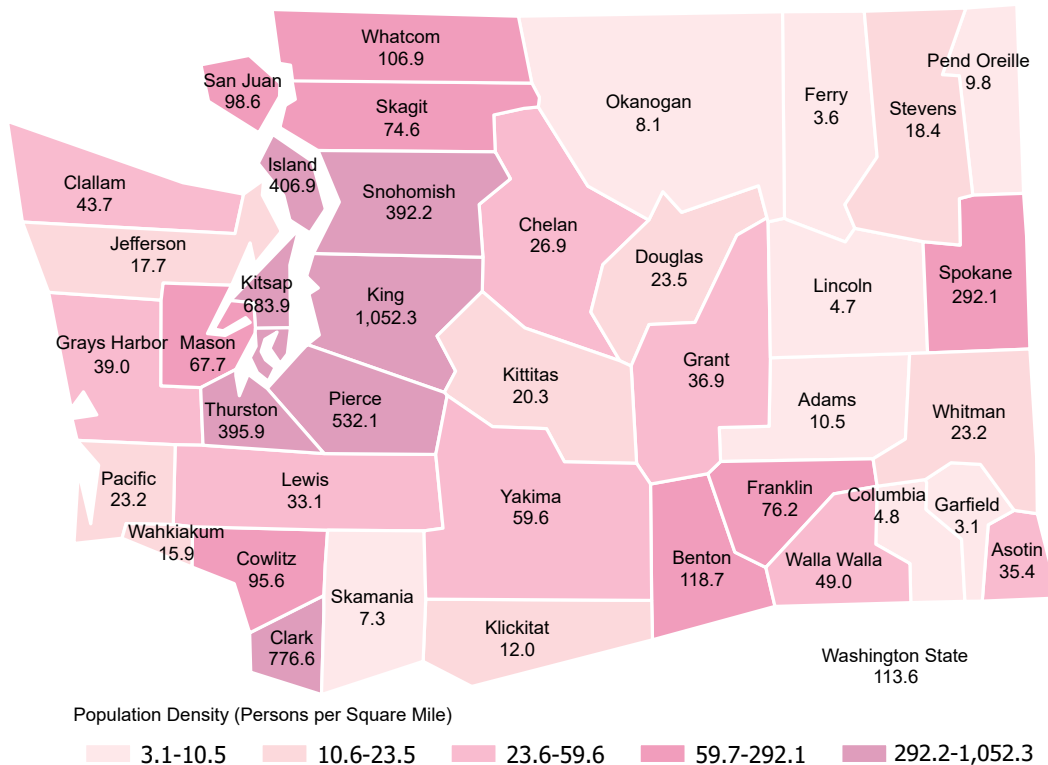
Note: Classification of map data based on quintile distribution.



## Percentage of State Total Population: 2019



## Population Density: 2019



Note: Classification of map data based on quintile distribution.